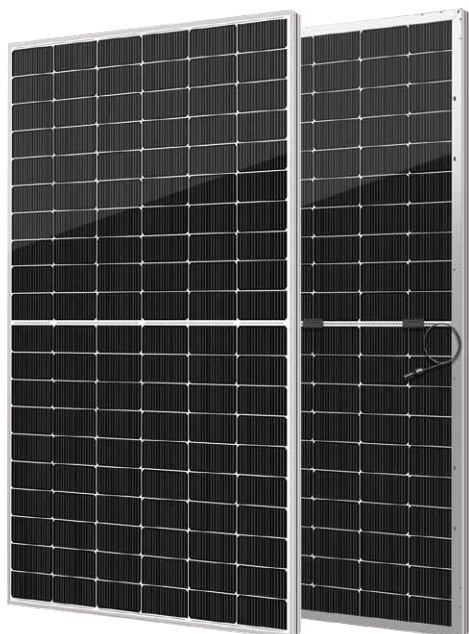


YUKON N Series

Half-Cell N-Type TOPCon
Bifacial Module

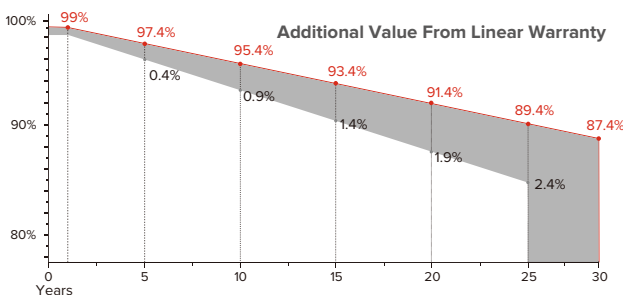
465-480Wp | **22.17%**
Module Power Output | Max Efficiency



Key Features

- High module conversion efficiency
- Better temperature coefficient
- Super multi busbar technology
- Low attenuation long warranty
- Superior load capacity
- Higher bifacially
- USA based liability insurance
- Houston, Texas based company

Warranty



15 <Years> Guarantee on product material and workmanship

30 <Years> Linear power output warranty

Product Certification

IEC61215:2016; IEC 61730:2016; UL61730	
IEC62804	PID
IEC61701	Salt Mist
IEC62716	Ammonia Resistance
IEC60068	Dust and Sand
IEC61215	Hailstone
Fire Type (UL61730):Type29	
ISO14001:2015; ISO9001:2015; ISO45001:2018	



About SEG Solar

SEG Solar is a leading manufacturer of high-performance solar panels for residential, commercial, and utility applications. The company, headquartered in Houston, Texas, is committed to providing cost-effective and reliable solar solutions that help customers reduce their energy costs and carbon footprint.



Download Datasheet

Electrical Characteristics

Module Type	SEG-465-BTB-BG			SEG-470-BTB-BG			SEG-475-BTB-BG			SEG-480-BTB-BG		
	Front STC	Front NOCT	Back STC	Front STC	Front NOCT	Back STC	Front STC	Front NOCT	Back STC	Front STC	Front NOCT	Back STC
Maximum Power -Pmp(Wp)*	465	349	372	470	353	376	475	357	380	480	361	384
Open Circuit Voltage -Voc(V)	42.60	40.47	42.58	42.80	40.66	42.78	43.00	40.85	42.98	43.20	41.04	43.18
Short Circuit Current -Isc(A)	13.82	11.06	11.06	13.88	11.10	11.10	13.94	11.15	11.15	14.00	11.20	11.20
Maximum Power Voltage -Vmp(V)	35.40	33.20	35.42	35.60	30.40	35.60	35.80	33.63	35.82	36.00	33.83	36.02
Maximum Power Current -Imp(A)	13.14	10.51	10.51	13.21	10.57	10.57	13.27	10.62	10.61	13.34	10.67	10.67
Module Efficiency(%)	21.48			21.71			21.94			22.17		
Power Tolerance(W)	(0, +4.99)											
Maximum System Voltage	1500V DC											
Maximum Series Fuse Rating	30 A											
Bifaciality	80%±10%											

STC: Irradiance 1000 W/m² module temperature 25°C AM-1.5

NOCT: Irradiance 800W/m² ambient temperature 20°C module temperature 45°C wind speed: 1m/s

*Measuring tolerance: ±3%

Mechanical Specifications

External Dimension	1909 x 1134 x 30 mm
Weight	27.3 kg
Solar Cells	N-TOPCon 182 x 91mm(120 pcs)
Front /Back Glass	2.0 mm AR coating semi-tempered glass / low iron
Frame	Anodized aluminium alloy
Junction Box	IP68 / 3 diodes
Connector Type	PV-CO02-xy / MC4
Cable Type	12 AWG PV Wire (UL)
Cable Length	Portrait: 400 mm(+) / 200 mm(-) Landscape: 1200 mm(+) / 1200 mm(-) or customized length
Mechanical Load(Front)	5400 Pa / 113 psf*
Mechanical Load(Rear)	2400 Pa / 50 psf*

*Refer to SEG installation Manual for details

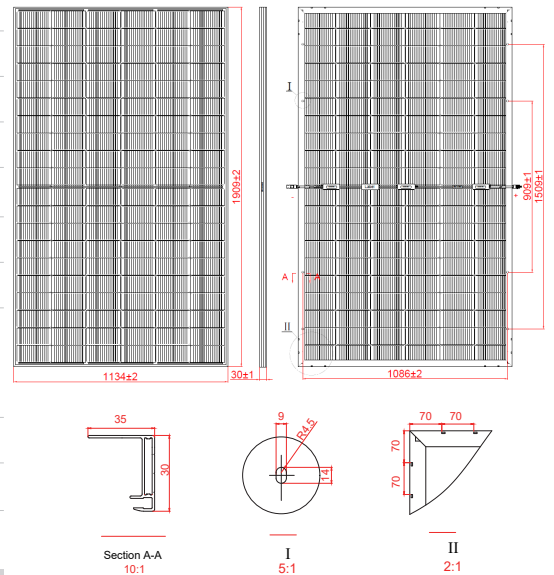
Packing Configuration

Container	20'GP	40'HQ
Pieces per Pallet	36	36
Pallets per Container	5	24
Pieces per Container	180	864

Temperature Characteristics

Pmax Temperature Coefficient	-0.30 %/°C
Voc Temperature Coefficient	-0.25 %/°C
Isc Temperature Coefficient	+0.046 %/°C
Operating Temperature	-40~+85 °C
Nominal Operating Cell Temperature (NOCT)	45±2 °C

Technical Drawing



*Refer to SEG installation Manual for details

I-V Curve

